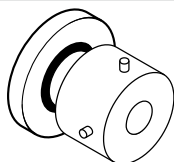
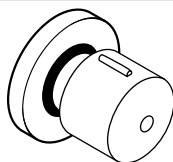


# Installation Instructions / Warranty

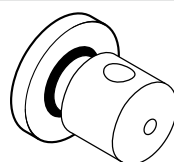
## VOLUME CONTROL VALVE 1/2" AND 3/4" Trim sets



**Starck**  
10976XX1



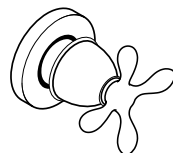
**Steel**  
35976801



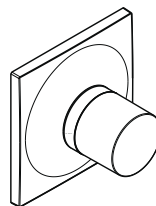
**Uno**  
38976XX1



**Phoenix**  
17955XX1



**Phoenix**  
17954XX1



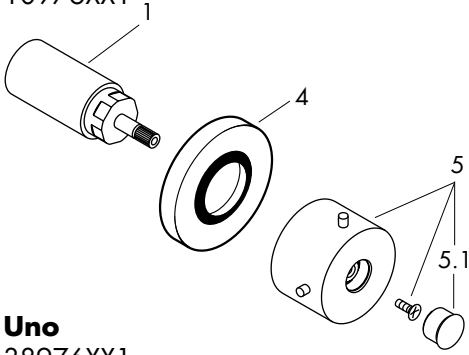
**Massaud**  
18976001

**Rough-in Ref. No.: 13974181 / 13975181**

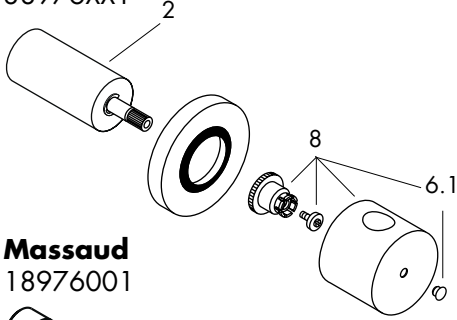
**hansgrohe**

AXOR | PHARO

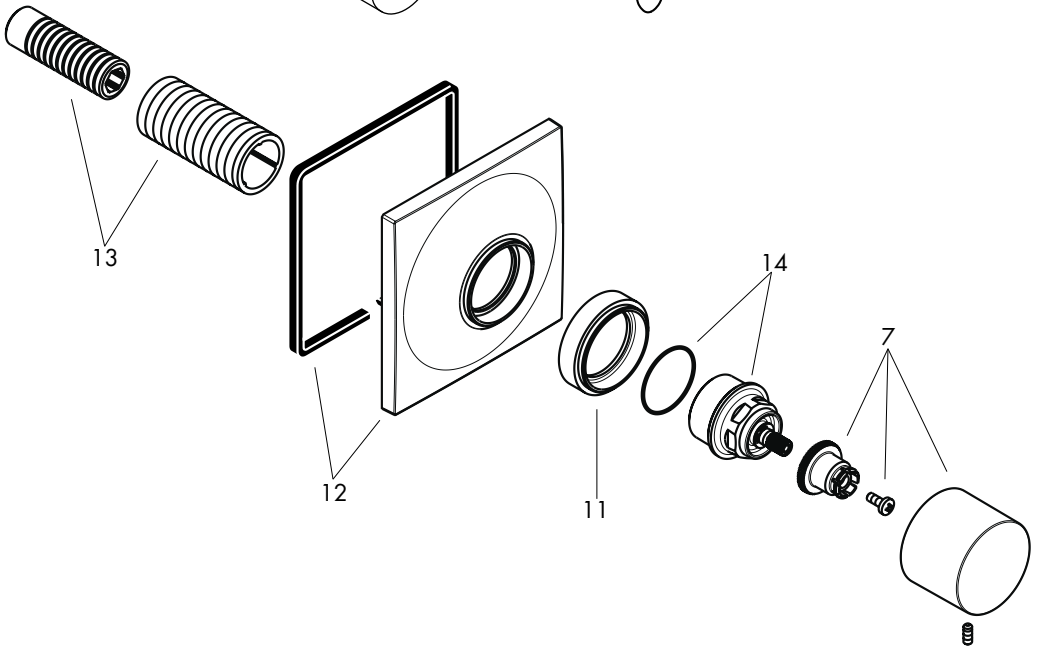
**Starck**  
10976XX1



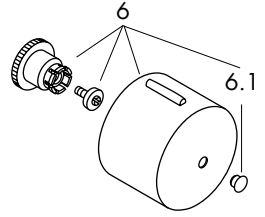
**Uno**  
38976XX1



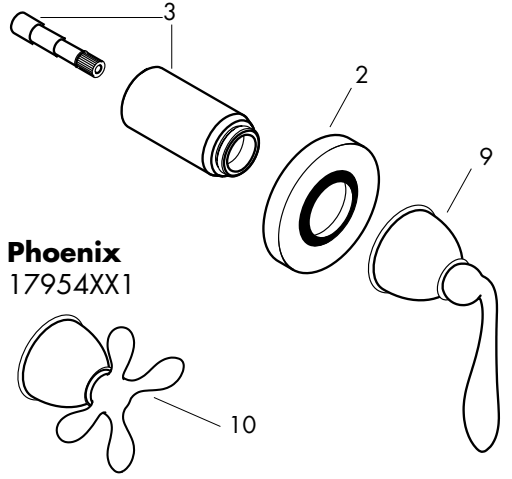
**Massaud**  
18976001



**Steel**  
35976801



**Phoenix**  
17955XX1



**Phoenix**  
17954XX1

## Spare parts

---

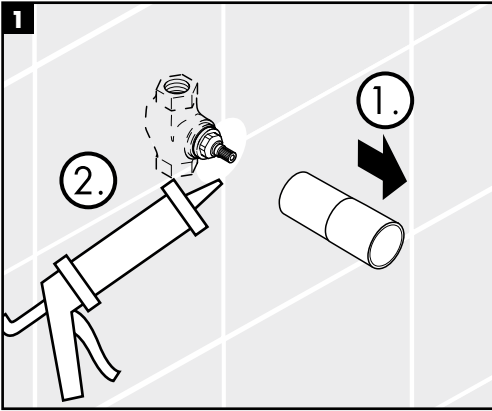
1	sleeve	Starck / Steel	92650XX0
2	sleeve	Uno	97512XX1
3	sleeve	Phoenix	92654XX0
4	escutcheon	Starck / Steel / Uno / Phoenix	94353XX0
5	handle	Starck	10993XX1
5.1	screw-cover	Starck	96540XX1
6	handle	Steel	35993801
6.1	screw-cover	Steel / Uno	96541001
7	handle	Massaud	18096001
8	handle	Uno	38993XX1
9	lever handle	Phoenix	96630XX1
10	cross handle	Phoenix	96794XX1
	cross handle	Phoenix	96794811
11	sleeve	Massaud	98835000
12	escutcheon	Massaud	98676000
13	fixing set	Massaud	96392000
14	nut	Massaud	98677000

### Extension Set (If needed, please order separately)

Extension set 1"	Starck / Uno / Phoenix / Steel	13978000
Extension set 1"	Massaud	96370000

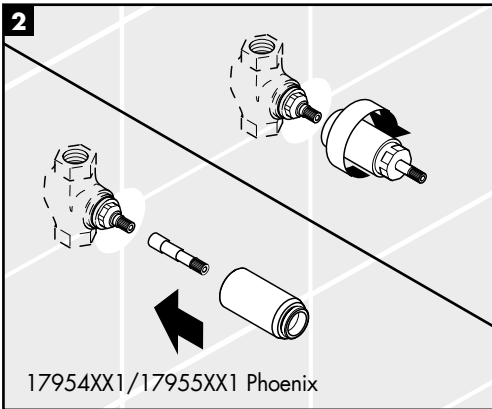
### XX = Color code:

Starck / Uno	- 00 chrome - 82 brushed nickel
Phoenix	- 00 chrome - 62 oil rubbed bronze - 82 brushed nickel
Steel	- 80 steel®
Massaud	- 00 chrome

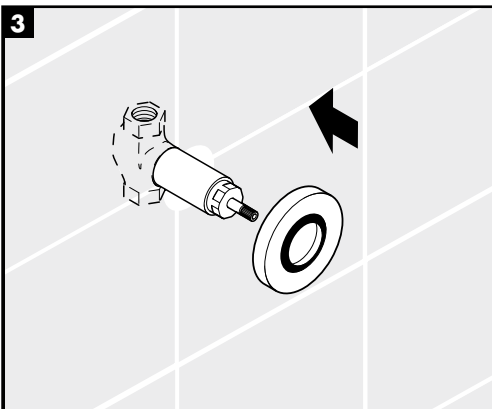


**Sleeve and escutcheon assembly**

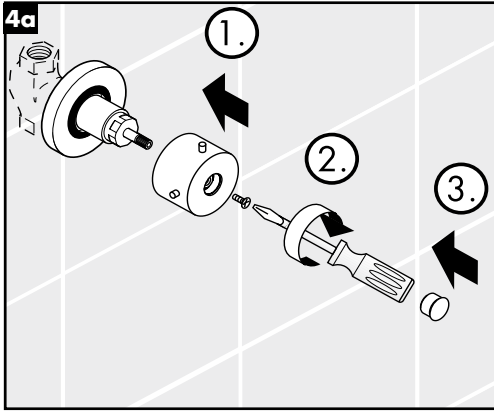
1. Remove the cover
2. Seal around the rough-in with waterproof bathroom sealant



Install the trim sleeve



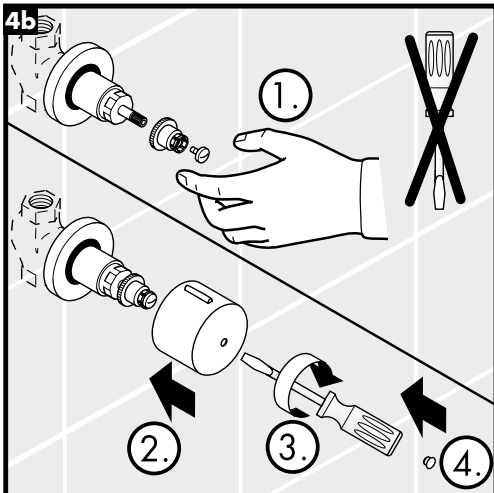
Install the escutcheon.



### Handle assembly

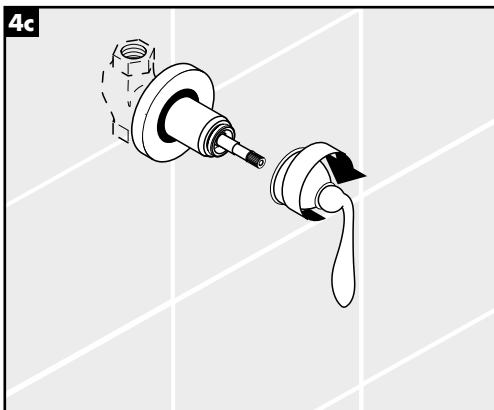
10976XX1 Starck

1. Push the handle onto the shaft.
2. Fix the screw.
3. Cover the hole by the plastic cap.

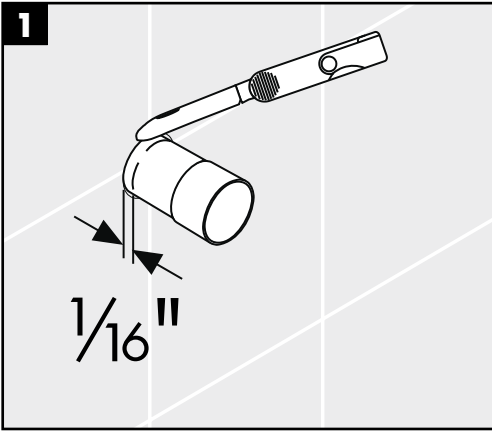


35976801 Steel /  
38976XX1 Uno

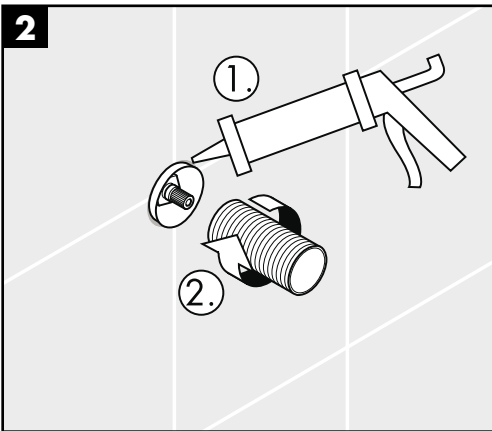
1. Lock the screw by hand only three turns.
2. Snap on the handle.
3. Fix the screw.
4. Cover the hole by the plastic cap.



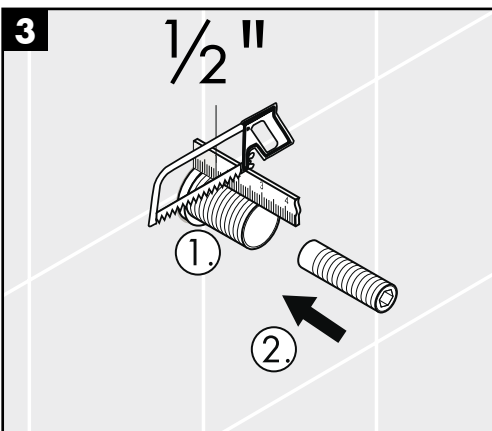
17954XX1 / 17955XX1 Phoenix



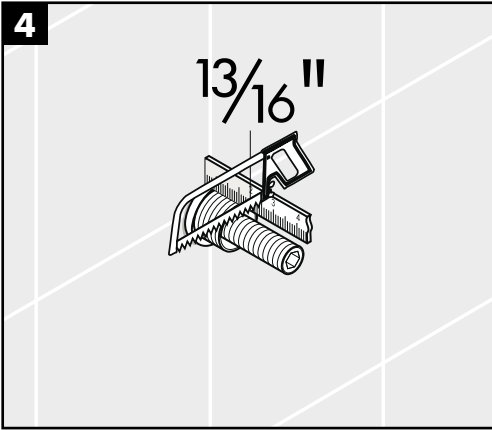
Cut the plaster shields so that they extend 1/16" outside the surface of the finished wall.



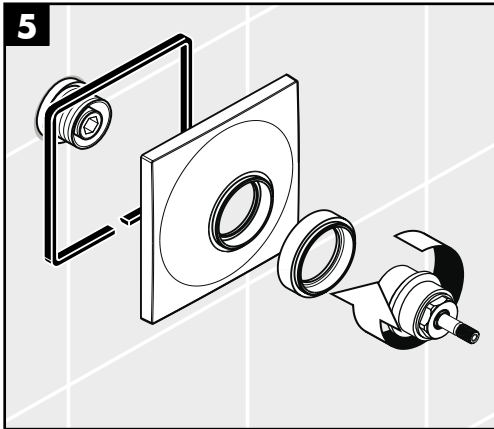
1. Seal the wall around the plaster shield with waterproof bathroom sealant.
2. Install the slip coupling on the valve.



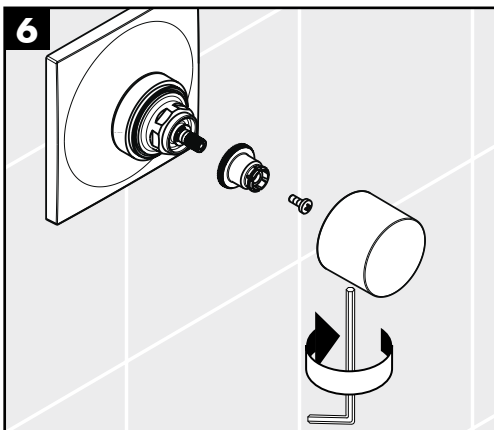
1. Mark a point on the slip coupling 1/2" from the surface of the finished wall. Cut the slip coupling at that point.
2. Install the spindle extension on the valve.



Mark a point on the spindle extension 13/16" from the surface of the finished wall. Cut the spindle extension at that point.



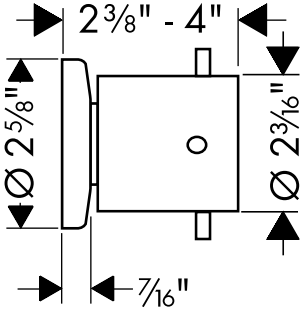
Install the sealing ring, escutcheon, sleeve and nut.



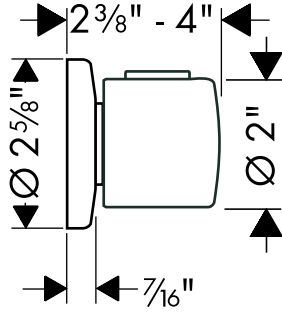
Install the snap connector and screw. Place the handle over the snap connector and press very firmly into place. Fix the hollow set screw with a hex wrench 1,5 mm.

**Starck**

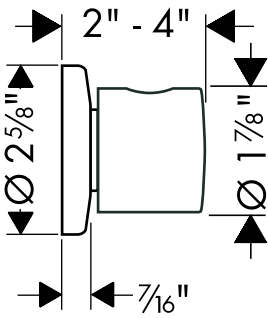
10976XX1

**Steel**

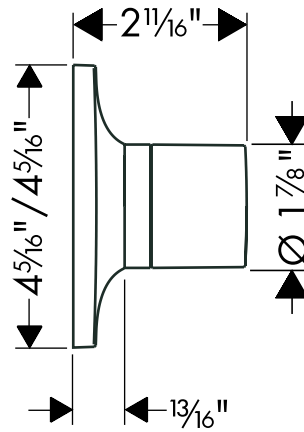
35976801

**Uno**

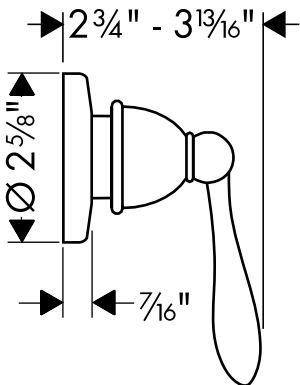
38976XX1

**Massaud**

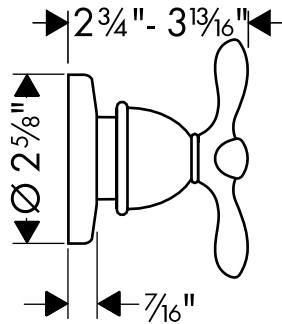
18976001

**Phoenix**

17955XX1

**Phoenix**

17954XX1





## **Cleaning Recommendation for Hansgrohe Products**

---

Modern faucetry and shower products utilize a combination of materials to comply with the needs of the market with regard to design and functionality.

To avoid damage, it is necessary to use some caution when cleaning. Damage caused by improper treatment is not covered under the Hansgrohe warranty.

### **Cleaning Materials for Faucets and Showers**

- To remove lime scale, use only products made specifically for that purpose. Always follow the manufacturer's instructions when using.
- Do not use cleaners that contain hydrochloric, formic, acetic, or phosphoric acids, as these will cause considerable damage to finishes and to plastic components.
- Never mix cleaning materials.
- Never use cleaners containing abrasives. Do not use abrasive cleaning cloths, pads, or sponges.

### **Cleaning Procedures**

- Clean your faucets and shower products as and when required. Regular cleaning will prevent scale buildup and water spotting.
- Follow the label instructions. Do not allow any cleaner to remain on the product for longer than necessary.
- When using spray cleaners, spray first onto a sponge or cloth – do not spray directly onto the product.
- After cleaning, rinse thoroughly with clear water to remove any cleaner residue.

### **Important**

- Soap and shampoo residue can also cause damage to the product. Rinse well with clean water after use.
- If the surface is already damaged, harsh cleaning materials will cause further damage.

## Limited Lifetime Consumer Warranty

---

This product has been manufactured and tested to the highest quality standards by Hansgrohe, Inc. („Hansgrohe“). This warranty is limited to Hansgrohe products which are purchased by a consumer in the United States after March 1, 1996, and installed in either the United States or Canada.

### WHO IS COVERED BY THE WARRANTY

This warranty extends to the original consumer purchaser only.

### WHAT IS COVERED BY THE WARRANTY

This warranty covers only your Hansgrohe manufactured product. Hansgrohe warrants this product against defects in material or workmanship as follows: Hansgrohe will repair at no charge for parts only or, at its option, replace any product or part of the product which proves defective because of improper workmanship and/or material, under normal installation, use, service and maintenance. If Hansgrohe is unable to provide a replacement and repair is not practical or cannot be timely made, Hansgrohe may elect to refund the purchase price in exchange for the return of the product.

### LENGTH OF WARRANTY

Replacement or repaired parts of products will be covered for the term of this warranty as stated in the following two sentences. If you are a consumer who purchased the product for use primarily for personal, family, or household purposes, this warranty extends for as long as you own the product and the home in which the product is installed. If you purchased the product for use primarily for any other purpose, including, without limitation, a commercial purpose, this warranty extends only (i) for 1 year, with respect to Interaktiv and Retroaktiv products, and (ii) for 5 years, with respect to AXOR, ShowerPower and Pharo products.

### THIS WARRANTY DOES NOT COVER, AND HANSGROHE WILL NOT PAY FOR:

- A. Conditions, malfunctions or damage not resulting from defects in material or workmanship.
- B. Conditions, malfunctions or damage resulting from (1) improper installation, improper maintenance, misuse, abuse, negligence, accident or alteration, or (2) the use of abrasive or caustic cleaning agents or „no rinse“ cleaning products, or the use of the product in any manner contrary to the product instructions.
- C. Labor or other expenses for the disconnection or return of the product for warranty service, or for installation or reinstallation of the product.
- D. Accessories or related products not manufactured by Hansgrohe.

### TO OBTAIN WARRANTY SERVICE

Contact your Hansgrohe retailer, or write to Technical Service at:

Hansgrohe Inc.  
1492 Bluegrass Lakes Parkway  
Alpharetta GA 30004

Or, call Hansgrohe toll-free at (800) 334-0455.

---

In requesting warranty service, you will need to provide

1. The sales receipt or other evidence of the date and place of purchase.
2. A description of the problem.
3. Delivery of the product or the defective part, postage prepaid and carefully packed and insured, to Hansgrohe Inc. 1492 Bluegrass Lakes Parkway, Alpharetta, Georgia 30004, Attention: Technical Service, if required by Hansgrohe.

When warranty service is completed, any repaired or replacement product or part will be returned to you postage prepaid.

## **EXCLUSIONS AND LIMITATIONS**

**REPAIR OR REPLACEMENT (OR, IN LIMITED CIRCUMSTANCES, REFUND OF THE PURCHASE PRICE) AS PROVIDED UNDER THIS WARRANTY IS THE EXCLUSIVE REMEDY OF THE PURCHASER. HANSGROHE NEITHER ASSUMES NOR AUTHORIZES ANY PERSON TO CREATE FOR IT ANY OBLIGATION OR LIABILITY IN CONNECTION WITH THIS PRODUCT.**

**HANSGROHE SHALL NOT BE LIABLE TO PURCHASER OR ANY PERSON FOR ANY INCIDENTAL, SPECIAL, OR CONSEQUENTIAL DAMAGES, ARISING OUT OF BREACH OF THIS WARRANTY OR ANY IMPLIED WARRANTY (INCLUDING MERCHANTABILITY).**

Some States do not allow the exclusion or limitation of incidental or consequential damages, so the above limitation or exclusion may not apply to you.

This warranty gives you specific legal rights, and you may have other rights which vary from State to State.

You may be required by law to give us a reasonable opportunity to correct or cure any failure to comply before you can bring any action in court against us under the Magnuson-Moss Warranty Act.

## **PRODUCT INSTRUCTIONS AND QUESTIONS**

Upon purchase or prior to installation, please carefully inspect your Hansgrohe product for any damage or visible defect. Prior to installing, always carefully study the enclosed instructions on the proper installation and the care and maintenance of the product. If you have questions at any time about the use, installation, or performance of your Hansgrohe product, or this warranty, please call or write to us at the toll-free number and address printed above.

---

**hansgrohe**

AXOR | PHÄRO

Hansgrohe Inc. 1490 Bluegrass Lakes Parkway Alpharetta GA 30004  
Phone 770 360 9880 Internet [www.Hansgrohe-USA.com](http://www.Hansgrohe-USA.com)